



15h.
16h.

SOCIAL AND FISCAL DISPOSITIONS CONCERNING PROFESSIONALS OF CREATIVITY IN EUROPE

Speaker: Prof. Dr. Dieter Haselbach, Zentrum für Kulturforschung
ICG culturplan Unternehmensberatung GmbH / Germany

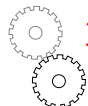
REPORT on the situation of professionals of creativity around
Europe and mapping of the existing social security and fiscal
requirements and their coordination through European legislation.

TIME FOR DISCUSSIONS ON:


- various national rules as to the “statute of the artist”
in European countries,
- specific dispositions that influence the sustainability
of creative professions
- concrete solutions to envisage.



16:00. DISCUSSION AS TO FOLLOW-UP IN THE DEVELOPMENT
16:30 OF A EUROPEAN NETWORK



16:30: END OF MEETING—FAREWELL COCKTAIL

Concept & design: 



SMarteu

European Professional Association of the Creative Sector

www.smarteu.eu

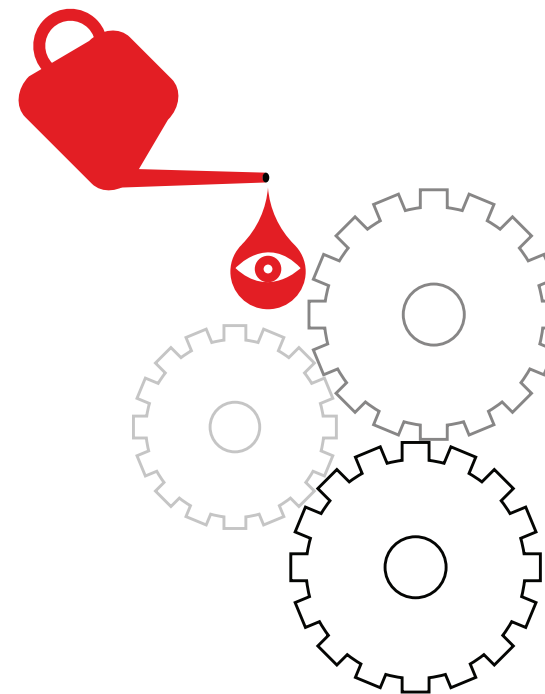
www.smartbe.be

www.smartfr.fr

Reflection group meeting

June 10th 2011 - Brussels

A European Network to support Professionals of Creativity



SMarteu

Where? SMartBe – Rue Emile Féron, n°70, 1060 Brussels

SMartEu invites you to reflect on the needs of professionals of creativity across Europe and possible solutions to build together in order to:

- secure career path
- provide administrative and financial solutions
- provide legal and economic advice and assistance




Programme

For those arriving in Brussels on Thursday June 9th we propose:



18:00: DEMONSTRATION OF SMART TOOLS



20:00: WELCOME DINNER

Friday, June 10th 2011



8:30: RECEPTION / BREAKFAST




9:00: INTRODUCTION AND PRESENTATION OF THE OBJECTIVES OF THIS MEETING

Animator: Alain Garlan, Development Director of SMartEu




9:30 - 11:15: EXISTING ADMINISTRATIVE AND ECONOMIC SUPPORT SERVICES: EXCHANGE OF BEST PRACTICES (PART ONE)


Within the framework of an open discussion, each participant is invited to make a short and practical presentation of his/her activities, the artists' condition in their region, the existing (public and private) dispositions, the successes and challenges encountered in putting support mechanisms into practice. This European round table will enable us to have an overview of the various situations, needs and possible solutions to envisage.




11:15 - 11:30: BREAK



11:30 - 13:00: EXISTING ADMINISTRATIVE AND ECONOMIC SUPPORT SERVICES: EXCHANGE OF BEST PRACTICES (PART TWO)



13:00 - 14:00: LUNCH



14:00 - 15:00: REFLECTIONS ON THE DEVELOPMENT OF SERVICES ON A EUROPEAN LEVEL: A NETWORK OF SUPPORT FOR PROFESSIONALS OF CREATIVITY

Animator: Julek Jurowicz, Managing director of SMartBe

Presentation and open discussion around a European network of support for professionals of creativity. Reflection on the first steps to be taken to put into place such network.